

OKLAHOMA DEPARTMENT OF TRANSPORTATION					
FED. ROAD DIST. NO.	STATE	PROJ. NO.	FISCAL YEAR	SHEET NO.	TOTAL SHEETS
	OKLA.				
DESCRIPTION			REVISIONS	DATE	

575+00

580+00

585+00

590+00

595+00

600+00

605+00

S.E. 1/4 S.E. 1/4
Sec. 3 T-04-N, R-26-W

N.E. 1/4 S.E. 1/4
Sec. 10 T-04-N, R-26-W

S.W. 1/4 S.W. 1/4
Sec. 2 T-04-N, R-26-W

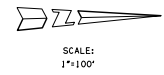
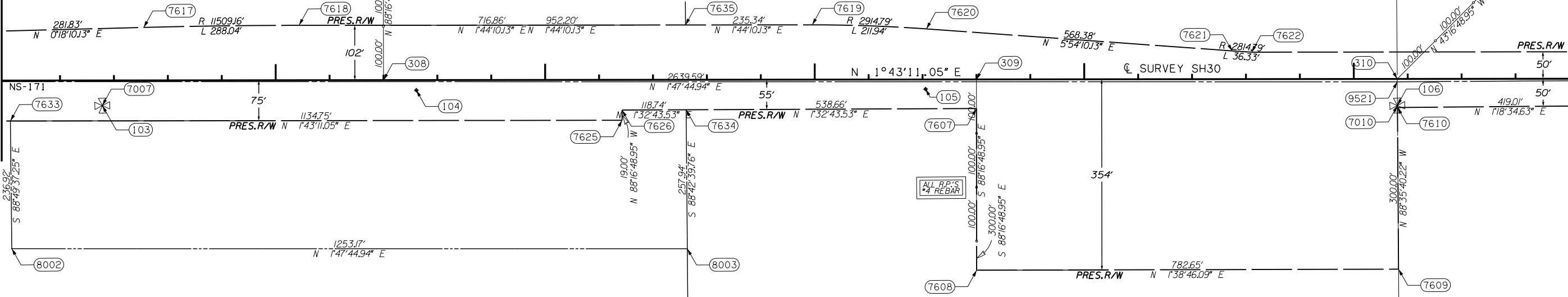
N.W. 1/4 S.W. 1/4
Sec. 2 T-04-N, R-26-W

Station Comparison
Station 592+01.75 on this survey -
Station 592+01.75 on SAP 673-B Plans
(North End of Bridge)

POT Sta. 582+00.00
Mag Nail on ϕ

POT Sta. 592+00.00
Mag Nail on ϕ

POT Sta. 600+80.71
Mag Nail on ϕ



PLS	ERS	OKLAHOMA DEPARTMENT OF TRANSPORTATION SURVEY DIVISION
DRAWN	BDK	
CHECKED	ERS	
APPROVED	ERS	
CREW		
		SURVEY DATA SHEET
		SW0.5007(1) STATE JOB NO.28768(04) SHEET NO. 57